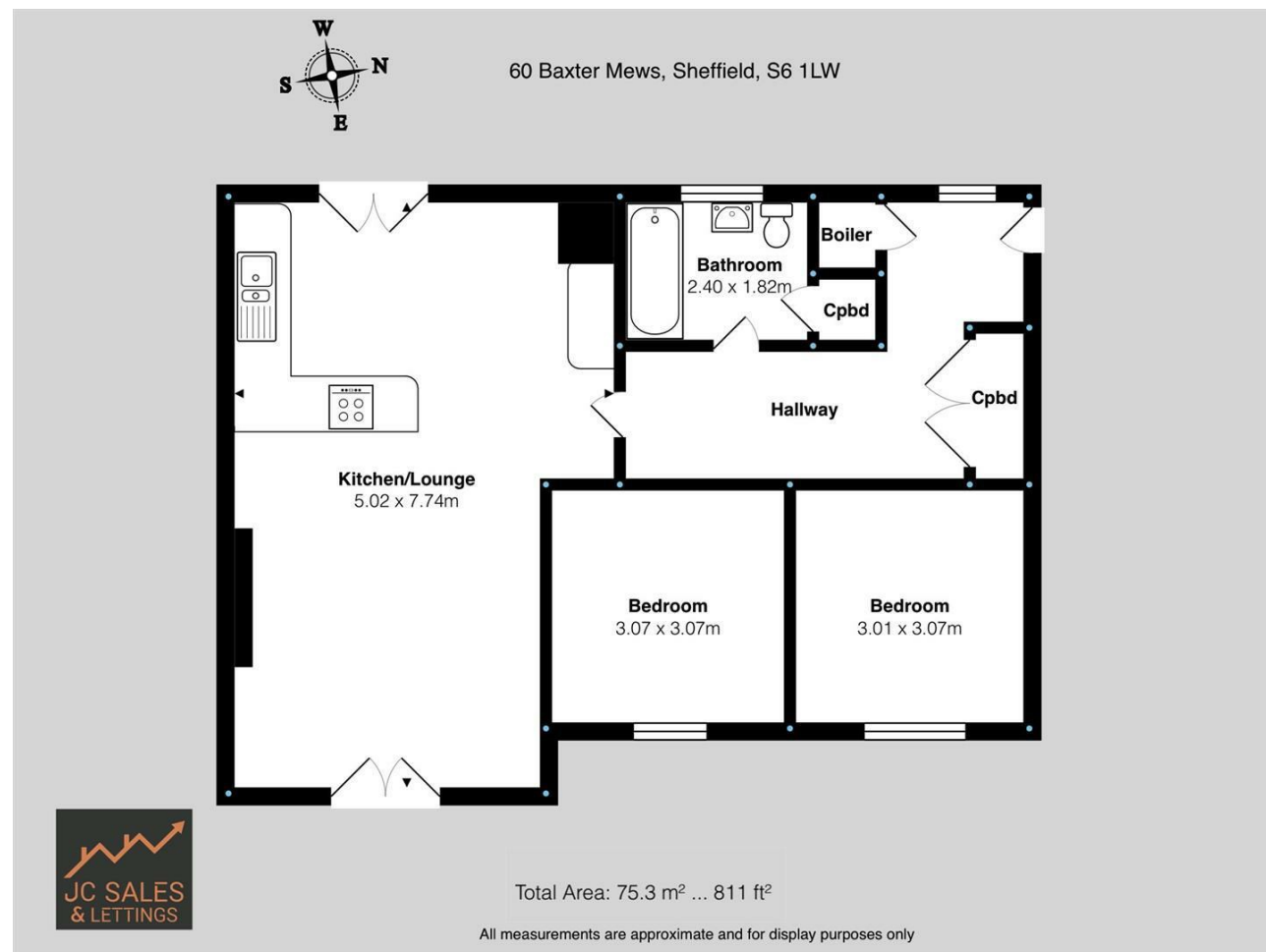


Viewings
 Viewings by arrangement only.
 Call 0114 483 0038 to make an appointment.

Vendors Comments
 Add text here

Energy Efficiency Rating		Current	Potential
<i>Very energy efficient - lower running costs</i>			
(92 plus) A			
(81-91) B			
(69-80) C		74	77
(55-68) D			
(39-54) E			
(21-38) F			
(1-20) G			
<i>Not energy efficient - higher running costs</i>			
England & Wales		EU Directive 2002/91/EC	



60 Baxter Mews, Sheffield, S6 1LW

£850 Per month

- Well presented top floor apartment
- Spacious and well proportioned accommodation
- Two good sized bedrooms
- Ideal for a single occupant, couple or small family
- Excellent access to public transport links
- Located in a highly sought after development
- One allocated car parking space
- Modern bathroom with W.C.
- Convenient for a range of amenities
- EPC Grade C

60 Baxter Mews, Sheffield S6 1LW

*** AVAILABLE FOR IMMEDIATE OCCUPATION ***

An excellent opportunity to rent this well presented top floor apartment, situated within this highly sought after development and offering well proportioned accommodation throughout. This attractive property is likely to be of particular interest to a single occupant, professional couple or small family alike and comes with one allocated car parking space.

Conveniently located for access to a wide range of local amenities and excellent public transport links, the property is ideal for those seeking comfortable accommodation within a popular and well regarded area.

In brief, the accommodation comprises of an entrance hall, open plan living kitchen, two bedrooms and a bathroom/W.C.
An early viewing is highly recommended to avoid disappointment.

EPC Grade C



Council Tax Band: A

